

DEWS, FLEWS & NEWS

OFFICERS 2011

President: Bob Gilmour
610-495-5099

Vice President: Gianna Aikman
610-692-6187

Secretary: Lisa Hrico
809 Hill Road
Wernersville, PA 19565
610-678-3991

Treasurer: Steve Aikman
900 Lincoln Avenue
West Chester, PA 19880
610-692-6187

BOARD

Bonnie Baxter 610-327-0719
Debbie Wurster 570-706-5529
Susan Coleman 610-750-4167



EDITORIAL POLICY: All opinions expressed in Dews, Flews & News are of the author. Any articles or graphics may be reproduced providing credit is given to the original author and/or publication. All readers are warned to obtain the advice



*A Publication for the Members of the Lenape Bulldog Club of Pa.
A licensed AKC Club and proud member Club of the Bulldog Club of America,
Division I.*

MEETING INFORMATION

The next meeting will be held on Oct 21, 2011. The meeting starts at 7:30 p.m. Most members come early and have dinner.

DIRECTIONS:

From 422 West—Follow 422 West (do not take Business route). Continue to Wyomissing Blvd. exit At the top of the ramp turn left. Go to 1st traffic light and turn right. Go to next traffic light and turn left. Go to the stop sign and turn right. Go to the next traffic light and turn left. Go thru the shopping mall area to the end at the traffic light (State Hill Road) turn right—Giannotti's is on the left hand side.

From PA Turnpike—Exit at Morgantown exit. Take route 176

North to Route 422 West and follow directions from above. Address is: 1714 State Hill Road Reading, PA 19610.



DATES TO REMEMBER

Dec 2, 2011—Club meeting in Dec.

Jan 7, 2012(Sat)—Clubs annual new year party at Bonnie & Ernie's.

Jan 21 & 22, 2012 next show



The Board has decided that there will be NO meeting in Nov. The next meeting after Oct will be Dec 2, 2011.

CLUB STUFF

The Board met and it has approved the nominating chair and later the other two members were appointed. They will give there report at the October meeting. The floor will be opened for nominations and then the election of officers will occur. The change is due to the boards

Cancelling of the November meeting due to its closeness to the BCA National shows. There will be a meeting in December and the date is being determined to allow for planning for the Jan shows.

The candle orders are due NO LATER than the Oct meeting. This is the Clubs only fund

Raiser so I hope everyone will assist in buying candles. Many thanks to everyone who helped with the match. Although the weather was not the greatest the place was great. Hopefully next year will see this grow for the club. Again thanks to every club member who helped in any way.



HOWL-O-WEEN TREATS

- 21/2 cups water
- 1/2 cup canned pumpkin (real not pie filling)
- 1/8 teaspoon real vanilla
- 1 egg
- 4 cups whole wheat flour
- 1/2 cups chopped pecans
- 1 tablespoon baking powder
- 1/4 teaspoon nutmeg
- 1/4 teaspoon cinnamon
- 1/4 cup oats

Preheat oven to 350 degrees. In a bowl mix water pumpkin, vanilla, and egg stirring well.

Add wet ingredients and mix well, making sure that no dry mixture is left.

Spoon batter into a greased muffin tin, filling each cup completely.

Sprinkle the top of each muffin with oats and bake for one hour and 15 minutes.

Cool completely and store in a sealed container for up to a week.

Makes 14 treats.



ALLERGY-FREE DOGS

A recent study reported by the New York Times looked at 173 one dog families in the US. The study found the “quantities of dog allergens in homes with supposedly hypoallergenic breeds are no

Different from those in homes with dogs widely considered nonhypoallergenic.”

The Times said that “it is possible that some breeds shed less dander—bits of hair and skin—than others. But according to this study, that may make little difference to allergy sufferers.”

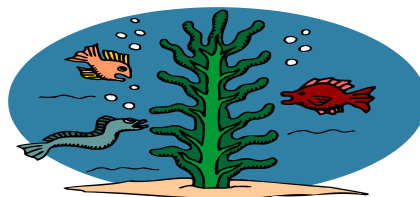


PARVOVIRUS ON THE RISE

Veterinarians have recently reported an rise in parvovirus cases this year in Louisiana, Pennsylvania, New Jersey, Kansas, Colorado and California—a wide variety of locations, through dog owners sometimes assume they live in areas free of the disease.

Parvo can kill a dog within two days. It spreads by contact with contaminated feces or anything that has touched them, and it can live on surfaces for many months. It most often affects puppies and is characterized by severe diarrhea. Treatment, including replacement of the lost fluids plus medication, can be on the costly side, and the mortality rate is still high.

Prevent the infection by keeping your dog’s surroundings clean, discouraging rodents and bugs, and—most importantly—by vaccinating your dog or puppy. For more information contact your veterinarian to investigate a vaccine schedule.



BLUE-GREEN ALGAE LEADS TO THREE CANINE DEATHES.

Staff at the Kansas State University Veterinary Medical Teaching Hospital treated four dogs for liver failure after the animals were exposed to blue-green algae . Only one dog survived. All four presented with acute liver failure and postmortem examinations

Showed severe liver necrosis. Blue-green algae, also known as cyanobacteria, can bloom in fresh water, especially under conditions of warm water, sunlight and the presence of nutrients in the water. Animals that ingest the water contaminated by the blooms typically develop vomiting and diarrhea within the first few hours. The liver is attacked quickly and dramatically and if the dose is high the patient will probably die in spite of treatment, stated Deon van der Merwe, assistant professor of diagnostic medicine and pathobiology and head of the toxicology section at K-State Veterinary Diagnostic Laboratory.



TRY A LITTLE SPONTANEITY

In a recent American Express survey, 12 percent of polled dog owners said they always travel with their dog and 48 percent said they never do.

Do you always do the same things with your dog, one way or the other? This autumn, if you have fallen into the everything is the same trap, consider the flexibility of a sometimes approach.

If you always give your dog a treat after she obeys, skip the treat sometimes and simply praise her. Randomly giving rewards keeps her guessing and praise is free.

If you always hold her leash on walks, give the leash to another family member so they, too, can build a canine connection.

If you always take her on a walk in a dog park, try taking her on a walk to nowhere instead.

If you always groom outside put a sheet down and give her an indoor spa treatment.



2012 DUES FORM

Please complete the dues form and return it no later than the end of December 2011. Members who fail to pay their 2012 dues will be suspended from membership .

PLEASE PRINT CLEARLY!

NAME: _____

ADDRESS: _____

PHONE NUMBER: _____ EMAIL: _____

DUES ARE \$10.00 PER MEMBER

TOTAL INCLOSED\$ _____

PLEASE MAIL CHECK (payable to LBCP) AND COMPLETED FORM TO:

**STEVE AIKMAN
707 BICKING DRIVE
WEST CHESTER, PA 19382**

Please remember that members must notify the Club of any future changes in address, phone numbers or email!