

# DEWS, FLEWS & NEWS

### OFFICERS 2010

President: Bob Gilmour  
610-495-5099

Vice President: Gianna Aikman  
610-692-6187

Secretary: Lisa Hrico

809 Hill Road  
Wernersville, PA 19565  
610-678-3991

Treasurer: Steve Aikman  
900 Lincoln Avenue

West Chester, PA 19880  
610-692-6187

### BOARD

Bonnie Baxter 610-327-0719

Pauline DeVito 570-366-3991

Debbie Wurster 570-722-2622

EDITORIAL POLICY: All opinions expressed in Dews, Flews & News are of the author. Any articles or graphics may be reproduced providing credit is given to the original author and/or publication. All readers are warned to obtain the advice of their veterinarian prior to giving any medications or treatments to their pets as any

*A Publication for the Members of the Lenape Bulldog Club of Pa.  
A licensed AKC Club and proud member Club of the Bulldog Club of America,  
Division I.*

## MEETING INFORMATION

The next meeting will be on held on Jan. 15, 2010. The meeting starts at 7:30 p.m. Most members come early and have dinner.

### DIRECTIONS:

From 422 West—Follow 422 West (do not take Business route). Continue to Wyomissing Blvd. exit At the top of the ramp turn left. Go to 1st traffic light and turn right. Go to next traffic light and turn left. Go to the stop sign and turn right. Go to the next traffic light and turn left. Go thru the shopping mall area to the end at the traffic light (State Hill Road) turn right—Giannotti's is on the left hand side.

From PA Turnpike—Exit at Morgantown exit. Take route 176

North to Route 422 West and follow directions from above.

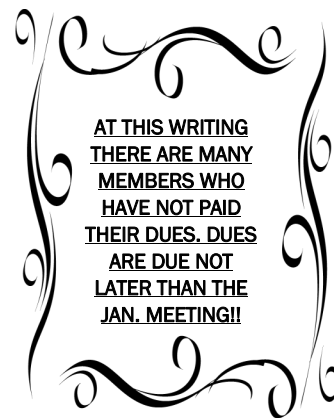


PLEASE NOTE THAT THERE WILL BE NO REGULAR MEETING HELD IN DECEMBER. THE NEXT REGULAR MEETING WILL BE 1/15/2010.



### DATES TO REMEMBER

- Jan 2 - Holiday Party
- Jan 23 & 24, 2010—Clubs next shows
- July 24, 2010 -Club picnic .
- Oct 10, 2010-Club match -not confirmed .



**AT THIS WRITING THERE ARE MANY MEMBERS WHO HAVE NOT PAID THEIR DUES. DUES ARE DUE NOT LATER THAN THE JAN. MEETING!!**

## CLUB STUFF

Club dues are due before December 2009. Please use the attached form so we can update our records. Members who have not paid their dues by the January meeting will be suspended for non-payment.

The Clubs' Holiday party will be

held on January 2, 2010 at Dom & Pauline DeVito's. See flyer for details and directions.

Elections occurred and the officers for 2010 are listed on this flyer.

The candle sale was great with a nice profit for the Club. Many thanks to everyone who helped.

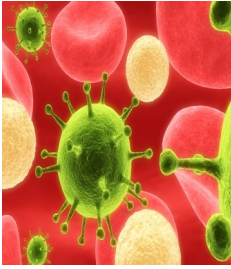
The program presented by Jeffrey Robertson, District sales manager for Royal Canin on Feeding requirements and breeding was really great and well received.

Next meeting will have many details on the shows so please plan to attend if at all possible.

HAPPY HOLIDAYS.



## CAN YOUR DOG CATCH H1N1 FLU?



Everyone is concerned about people walking around and spreading the H1N1 flu and everyone they come in contact with including the question can it spread to our dogs?

“The real answer is : we don’t know,” says Carina Blackmore, DVM., chair of the Zoonotic Influenza Committee for the National Association of State Public Health Veterinarians. Blackmore is Florida’s state public health vet. “we know it’s a very plastic [changeable] virus and we know, for example, that

H5N1, the bird flu, has been found in dogs.” Virus lock on cells like little pieces of a puzzle and that the pieces go together different for varies species, but viruses have the ability to re-configure themselves for additional species. Currently there are no reports of H1N1 in dogs but viruses are constantly changing. At this time, reports Miranda Spindel, DVM, the risk of a direct transmission from people to dogs is very small. She did alert owners should remain vigilant about their

dogs’ activities and any symptoms—including discussing the new vaccinate against canine influenza virus with you Vet; preventing you dog from sharing bowls and toys if possible; avoiding dog parks to lessen exposure; and watching for coughing, runny nose and fever.

“The dog flu virus might jump species, too—that’s a possibility as well,” Balckmore says.

The bottom line, Spindle adds: “ I would never say never.”

## WHAT WE LEARN FROM OUR DOGS



Live simply. Love generously. Care deeply. Speak kindly. Remember, if a dog was the teacher you would learn things like:

When loved ones come home, always run to greet them.

Never pass up the opportunity to go for a joyride.

Allow the experience of fresh air and the wind in your face to be pure ecstasy.

Take naps.

Stretch before rising.

Run, romp, and play daily.

Thrive on attention and let people touch you.

Avoid biting when a simple growl will do.

On warm days, drink lots of water and lie under a shady tree.

When you’re happy, dance

around and wag your entire body. Delight in the simple joy of a long walk.

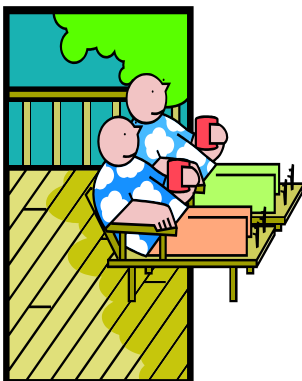
Never pretend to be something you’re not.

When someone is having a bad day, be silent, sit close by, and nuzzle them gently.

Be loyal.

ENJOY EVERY MOMENT OF EVERY DAY !

## WATCH OUT FOR ARSENIC POISONING



If you thought that arsenic poisoning was only in the movies or old books, think again!

Decks, balconies, and porches made of pressure-treated wood that was made before 2004 often contain chromate copper arsenate. Arsenic from this now banned preservative can cling to your dog’s paws and coat, especially if the wood has re-

cently been power-washed, sanded, or power-sanded. Symptoms of arsenic poisoning include vomiting, diarrhea, dehydration, weakness, and drooling. Dogs who frequently lie on CCA-treated decks may also develop thickened and discolored skin on areas that make contact with the wood.

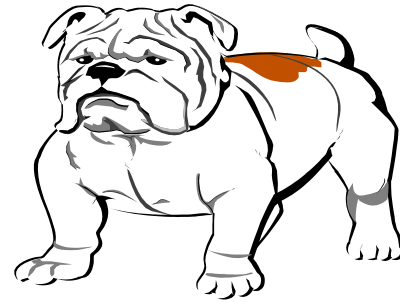
To protect your dog, never allow

them to drink rainwater that accumulates on these decks or other structures, and wipe them down after exposure to the surface. Don’t allow them to dig or play under or near contaminated wood as arsenic can leach into the dirt.

If you have CCA-treated deck, regularly treat the wood with a sealant or, if you can, replace the wood altogether.

**IF YOU HAVE NOT PAID  
YOUR DUES PLEASE DO  
SO BEFORE THE JAN  
MEETING. Please don't be sus-  
pended for non-payment!!**

**LENAPE BULLDOG CLUB  
OF PENNSYLVANIA  
2010 DUES FORM**



NAME: \_\_\_\_\_

ADDRESS: \_\_\_\_\_

\_\_\_\_\_

CITY: \_\_\_\_\_ STATE: \_\_\_\_\_ ZIP: \_\_\_\_\_

PHONE: \_\_\_\_\_ EMAIL: \_\_\_\_\_

DUES ARE \$10.00 PER PERSON .

TOTAL ENCLOSED: \_\_\_\_\_

If you joined the Club after June 2009 you do not need to pay again BUT we ask that you complete the information fields and send the form in to verify you mailing information and email address. If this applies to you please check the box { }.

MAKE CHECKS PAYABLE TO LBCP.

MAIL FORM AND CHECK TO:

LISA TREFFINGER

1104 CHURCH ROAD

EAST GREENVILLE, PA. 18041



# LENAPE BULLDOG CLUB OF PENNSYLVANIA

## BACK TO BACK SPECIALTY SHOWS

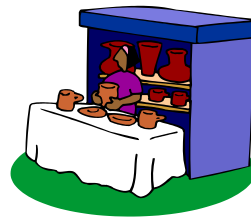
Riveredge Convention Center 2017 Bernville Road Reading, PA  
19601

January 23, 2010

Sweepstakes - **Jennifer Thomas**

Judge - **Mr. Dale Flippin**

Match - **Denise DeAcosta**



VENDORS

Veterinarian, **Dr. Dana Clarke**, will present her soon to be published paper “Resolution of Severe Hypoplastic Trachea in Six English Bulldog Puppies with Bronchopneumonia, Following Growth to Maturity” on Saturday night after the match.

January 24, 2010

Judge - **Mrs. Paula Flippin**

Showchair

**Mrs. Debbie Wurster**

PO Box 1615

76 Jeffers Way

Albrightsville, PA 18210-1615

Phone: 570-706-5529



CALL QUALITY INN  
AIRPORT FOR  
ACCOMMODATIONS

610-736-0400



FOOD AVAILABLE  
FOR PURCHASE AT  
SHOW SITE.



# ANNUAL HOLIDAY PARTY



**WHEN—JANUARY 2, 2010 ( SATURDAY)**

**WHERE—PAULINE DEVITO'S**

**320 LAUREL ROAD**

**DEER LAKE**

**ORWIGSBURG, PA 17961**

**570-366-3991**

**TIME—4:00 TILL 6:00pm FELLOWSHIP**

**6:00 TILL ? DINNER AND FUN**

Call or email Pauline, 570-366-3991 or neenees@fastcable.net to let her know how many in your family are coming (please leave your bullies home to rest) and what you are bringing.

The Club will supply the meats and the rest is a covered dish type party.

Please respond ASAP as the Club needs to plan for the party as soon as possible.

We hope to see you!

## PLANNED FUN

1. We will be having a fun Pollyanna. Bring a wrapped gift which could be used by a man or woman. No names on the wrapping. Cost limit is \$5.00. Bring a gift get a gift. Remember that these Pollyanna could be picked by a child in attendance. Visit your dollar store and be creative.
2. There will be a money tree to which you can clip any money you want to be donated to a dog cause which will be decided at the January Club meeting.



## DIRECTIONS

From East & West: I-78 to Exit 29. Take 61 North Proceed from —Red Light at Cabela'sl.

From South : Take 422 West to 222 North. Proceed from —Red Light at Cabela'sl

From Red Light at Cabela's continue past for about 5 miles. You will start down a hill which has the two lanes merge into one. There is a "messy" flower shop on the right at Laurel Road. Turn right and go through 2 stop signs and Pauline is the 5th house on the right.

Need help with directions ?? Contact Pauline DeVito 576-366-3991

